

# PRF COLD REPAIR FOR RADIAL AND BIAS TYRES

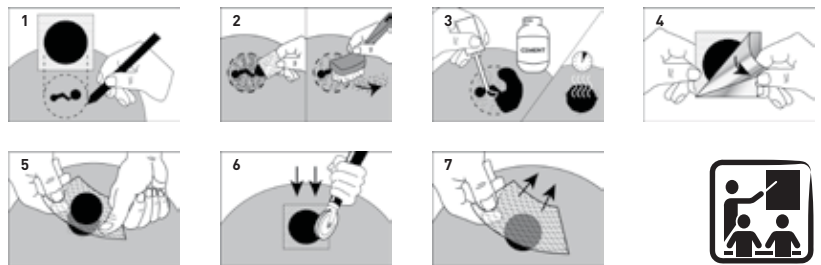


- Use **OPALE** chemical vulcanizing solution



## ► Box of parts

	Dimensions of parts (mm)	Quantity per box
<b>60700</b>	Ø 35	100
<b>60701</b>	45 x 45	50
<b>60702</b>	60 x 60	50
<b>60703</b>	69 x 69	50



TYRE USE	Tyre speed symbol	T = Ø (mm) max TREAD injury prepared	PRF	PRF	PRF	PRF	Max number of repairs
			Ø 35mm	Ø 45mm	Ø 60mm	Ø 69mm	
	<J	3	X				2
		4.5		X			2
		6 (max)			X		2
	J<V	3 (max)	X				1
	<H	3	X				Unlimited
		4.5		X			Unlimited
		6			X		Unlimited
	H, V, Z	3	X				1
		4.5		X			1
		6 (max)			X		1
		4.5			X		Unlimited
		6			X		Unlimited
		8				X	Unlimited

- Tread repairs only.
- Speed code restrictions: comply with local laws that can be different in each country.

